

PART OF THE SW. 1/4, OF SECTION 5, T.7N., R.2E., S.L.B. & M.

149

# SUMMIT EDEN PHASE 1B AMENDMENT 1

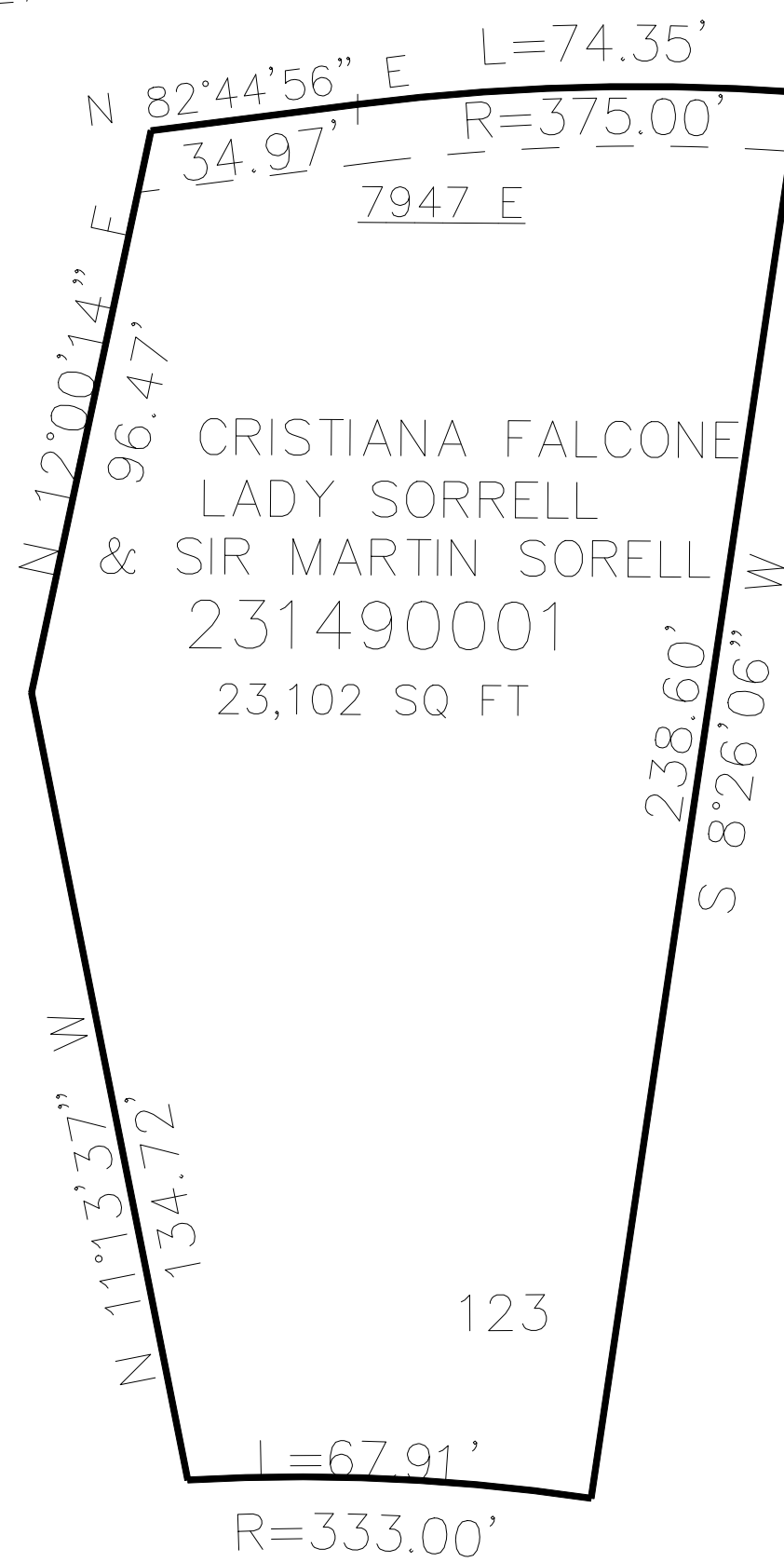
IN WEBER COUNTY

TAXING UNIT: 546

SCALE 1" = 30'

SEE PAGE 129

HEARTWOOD DRIVE (6110 NORTH ST)



SEE PAGE 129

SEE PAGE 129

123

SUMMIT PASS

SEE PAGE 129

10' UTILITY & DRAINAGE EASEMENTS EACH  
SIDE OF PROPERTY LINES AS INDICATED  
BY DASHED LINES EXCEPT AS OTHERWISE  
SHOWN.

FOR COMPLETE ENG DATA SEE  
ORIGINAL DEDICATION PLAT IN  
BOOK 80, PAGE 83 & 84 OF RECORDS.